

MONTHLY MEMBERSHIP PROGRESS REPORT

District 33 S

Results as of: 5/31/2024

GMT:

LOCATION MASSACHUSETTS

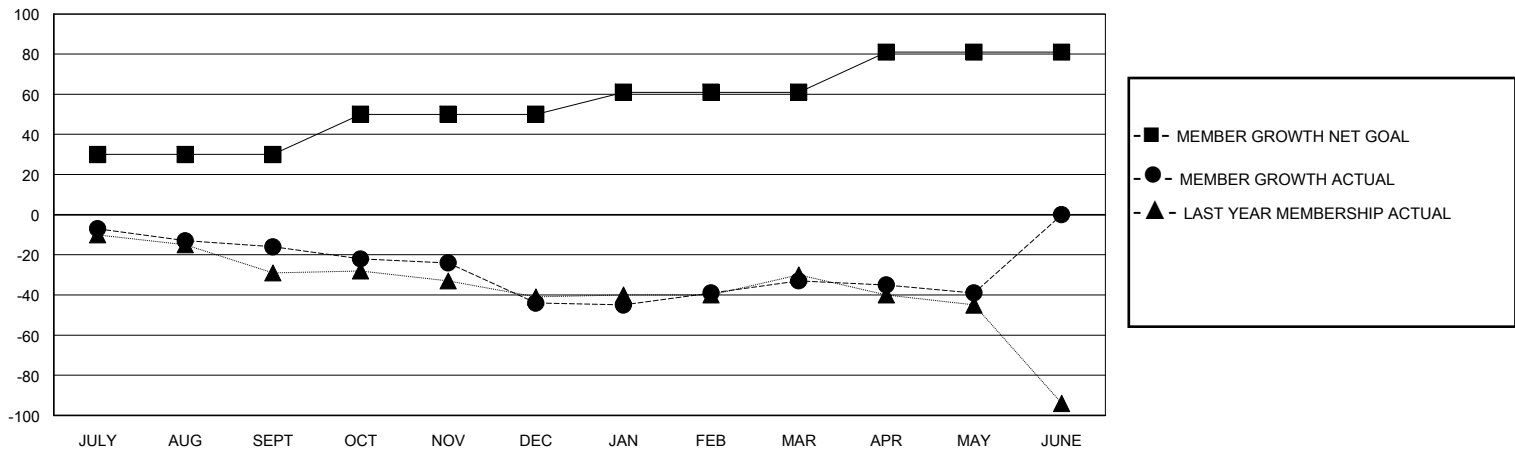
GMT CA

Clubs				Members			
RESULTS FOR 2023-2024				RESULTS FOR 2023-2024			
QUARTER	NEW CLUB GOAL	NEW CLUBS	DROPPED CLUBS	QUARTER	MEMBER GROWTH NET GOAL	MEMBER GROWTH ACTUAL	DROPPED MEMBERS ACTUAL (including transfers)
JULY/AUG/SEPT	0	0	1	JULY/AUG/SEPT	30	22	37
OCT/NOV/DEC	0	0	0	OCT/NOV/DEC	20	30	52
JAN/FEB/MAR	1	0	0	JAN/FEB/MAR	11	40	26
APR/MAY/JUNE	0	0	0	APR/MAY/JUNE	20	11	16

GOALS AND ACTUAL NEW CLUBS CUMULATIVE



GOALS AND ACTUAL MEMBERS CUMULATIVE



DROPPED CLUBS: 1	24 CLUBS OF 47 ADDED 1 OR MORE NEW MEMBERS	GENDER DISTRIBUTION MALE 870 (60.17%) FEMALE 575 (39.76%)
DROPPED MEMBERS DECEASED 25 CLUB CANCELLED 0 OTHER 106 TOTAL 131	CLICK HERE FOR CUMULATIVE MEMBERSHIP DATA	TOTAL FAMILY UNIT MEMBERS 238 FAMILY MEMBERS PAYING HALF DUES 121